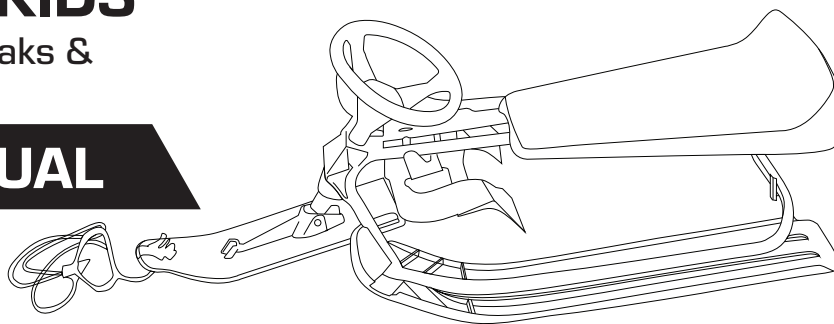


SNOW SLED FOR KIDS

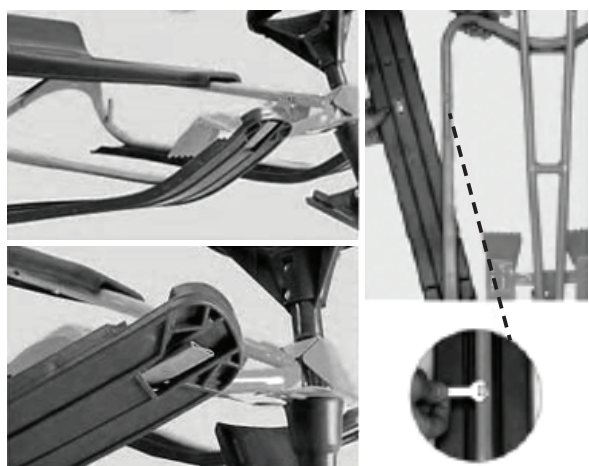
with Steering Wheel, Twin Breaks &
Padded Steering Wheel

ASSEMBLY MANUAL



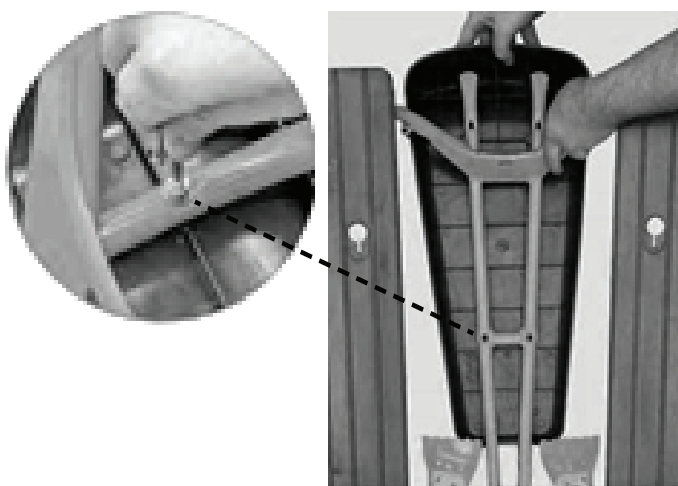
STEP 1:

Attach the side skis under the left and right lower parts of the frame and secure nuts with flat end on bottom of skis.



STEP 2:

Screw four bolts through the underside of the top frame, and secure under the seat.



STEP 3:

Insert the steering shaft into the steering hole.



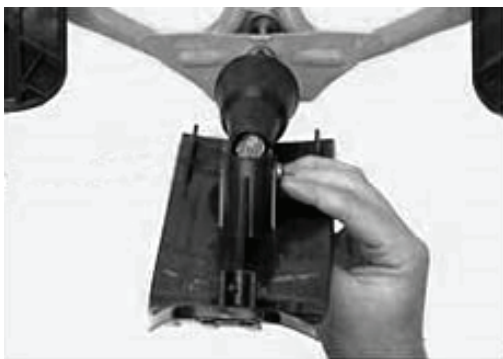
STEP 4:

Slip the steering cover over the steering shaft.



STEP 5:

Insert the bottom of the steering shaft into the front ski.

**STEP 6:**

Fasten bolts on the front ski, steering cover, and steering shaft.

**STEP 7:**

Clip the steering wheel into the steering shaft.

**STEP 8:**

Fasten bolts connecting the wheel and the steering shaft.

**STEP 9:**

Attach spring underneath steering wheel to front ski.

**STEP 10:**

Wrap padded sleeve around the steering wheel and connect on the underside.

**STEP 11:**

Attach the pull rope.

